

# He Kupu Whakataki

He Aratohu mā te Pouako

# Ngā ihirangi

Tirohanga whānui	2
Mō tēnei rauemi?	2
Te pūtake	3
Ngā hononga marau	3
Mō te pukamahi a te ākonga:	
TŌKU ARA REO MĀORI	3
Mō te pūkei whakaahua:	
HE PŪKEI WHAKAAHUA O TE MANA O TE REO MĀORI	4
Mō ngā Aratohu mā te Pouako:	
TE MANA O TE REO MĀORI: HE ARATOHU MĀ TE POUAKO	4
He tukanga pakirehua pāpori	4
He aha te tukanga pakirehua pāpori? . . . . .	4
Te āhua o te tukanga pakirehua pāpori? . . . . .	4
Te mahere i tētahi tukanga pakirehua pāpori? . . . . .	6
Te āhua a te tukanga pakirehua pāpori mō tēnei horopaki? . . . . .	7

## Ngā whakaahua

**Whakaahua 1:** March on Parliament in support of the Maori Language. Dominion Post (Newspaper): Photographic negatives and prints of the Evening Post and Dominion newspapers. Ref: EP/1980/2470/20A-F. Alexander Turnbull Library, Wellington, New Zealand. /records/22342091

**Whakaahua 2:** Morgan, Jack, active 1961-1966. Morgan, Jack: Oihi Bay, Christmas Day 1814; Samuel Marsden preaching the first sermon to the Maoris. [Auckland, Weekly News, 1964]. Ref: B-077-002. Alexander Turnbull Library, Wellington, New Zealand. /records/23113825

**Whakaahua 3:** Dame Iritana Tāwhiwhirangi, Government House – Image released under Creative Commons Attribution 4.0 International licence

**Whakaahua 4:** Piripi Walker (standing) and Vincent Olsen-Reeder (seated) © Manatū Taonga | Ministry for Culture and Heritage 2021

I whakaputaina e Huia Publishers mō Manatū Taonga | Ministry for Culture and Heritage i te tau 2021

Huia Publishers  
39 Tiriti o Pipitea, Pouaka Poutāpeta 12280  
Te Whanganui-a-Tara, Aotearoa  
www.huia.co.nz

ISBN 978-1-77550-742-0  
© Manatū Taonga 2021

# Tirohanga whānui

He reo taketake te reo Māori, taketake ake nō Aotearoa nei. Koia nei tētahi o ngā reo tūturu o Aotearoa, ā, he taonga i raro i te Upoko Tuarua o te Tiriti o Waitangi. Nā runga i tērā ka noho te reo Māori ki te tuakiri, ki te ahurea, ki te hītori hoki o Aotearoa.

Ko tēnei rauemi, Te Mana o te Reo Māori, he rauemi ipurangi mō te hītori o te reo Māori e hāngai pū ana ki te kerēme WAI11 ki te Taraipiunara o Waitangi. Kei tēnei kete rauemi tētahi pūrākau matihiko mō te mimititanga me te rauoratanga o te reo Māori; he rārangi wā o ngā kaupapa nui; he haurongo mō ngā rangatira me te hunga tautoko i te reo Māori;

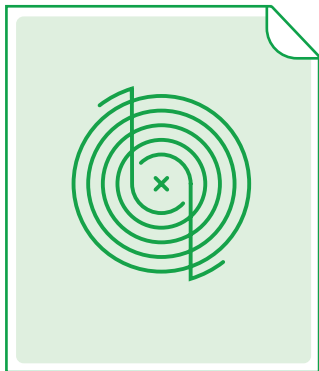
he kauhau me ngā mātanga me ngā māngai mō te reo; me ētahi atu rauemi mātauranga.

Kei tēnei kete ngā rauemi whakaako, akoako hoki hei āwhina i ngā ākonga me ngā kaiako ki te tūhura i ā rātou ake hononga ki te reo Māori. Mā tēnei rauemi e taea e ngā ākonga te tūhura i ngā kōrero hītori e pā ana ki ngā kerēme mō te reo Māori i haria ki te Taraipiunara o Waitangi me te whakarauoratanga o te reo Māori.

Ka mārama ake ngā ākonga ki ngā take matua pēnei i te Whakapapa, te Tūrangawaewae, te Whanaungatanga, te Mana Motuhake, me te Kaitiakitanga nā roto i ngā ākonga hītori mō te reo Māori.

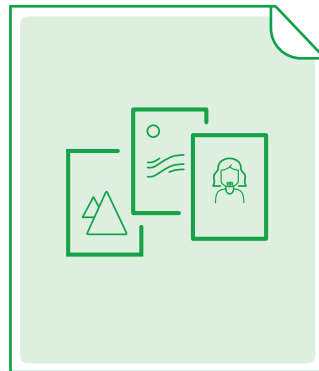
## Mō tēnei rauemi

E rārangi ake nei ngā rauemi whakaako, akoako hoki kei tēnei kete:



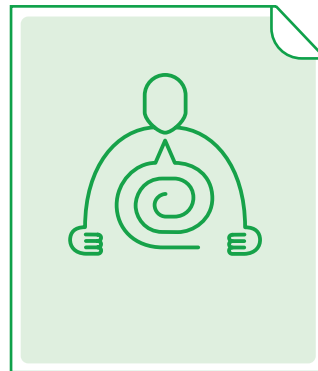
**Tōku Ara Reo Māori**

<https://bit.ly/3CgeFhc>



**He Pūkei Whakaahua o Te Mana o te Reo Māori: Pūkei Whakaahua**

<https://bit.ly/3nAAdRk>



**Te Mana o te Reo Māori: He Aratohu mā te Pouako**

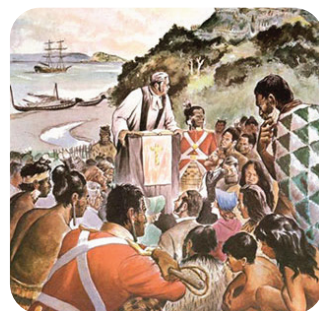
<https://bit.ly/3hHvdqx>

Ka taea hoki tō whakamahi i ngā rauemi ipurangi nei:



**Te Mana o te Reo Māori: he pūrākau matihiko**

<https://bit.ly/3EilzDo>



**Te Mana o te Reo Māori: he rārangi wā**

<https://bit.ly/394c25n>



**Te Mana o te Reo Māori: ngā haurongo**

<https://bit.ly/395gO2w>



**Te Mana o te Reo Māori: he wānanga hītori**

<https://bit.ly/3z5Xpcl>

## Te pūtake

Mā tēnei rauemi e tautoko ngā ākonga ki te:

- ▶ whakaaro ake mō ā rātou ake hononga ki te reo Māori
- ▶ tūhura i ngā kōrero onamata me ngā kōrero inamata hoki e pā ana ki ngā kerēme mō te reo Māori ki te Taraipiunara o Waitangi
- ▶ rangahau me te tuhi i ā rātou ake haerenga reo Māori me ērā o ō rātou whānau, hapū, iwi me ngā hapori
- ▶ tū hei māngai mō ngā panonitanga o te rauoratanga o te reo Māori.

Ka whakahautia ngā ākonga ki te whakaata i ō rātou ake wawata mō te reo Māori mā te whakaaro ake mō:

- ▶ ngā āhuratanga hītori me ngā āhuratanga inamata e pā ana ki ā rātou haerenga reo Māori
- ▶ te reo Māori me tōna pānga ki ā rātou ake, ki tō rātou ao hoki
- ▶ te whai wāhi atu ki te rauoratanga o te reo Māori.

Mā tēnei rauemi e tautoko ngā ākonga ki te tūhura me te whakaata i ā rātou ake hononga ki te reo Māori. He whakahihiko i ā rātou ki te mahere i te hononga mō ngā rā ki tua e pā ana ki ā rātou, ki ō rātou whānau, te hapū, te iwi, te hapori rānei.

## Ngā hononga marau

Kei ia o ngā aratohu mā te pouako ngā hononga ki ngā marau e hāngai ana ki ngā upoko o te pūrākau matihiko mō Te Mana o te Reo Māori. Ko tā tēnei rauemi he whakaatu i te mimititanga me te whakarauoratanga o te reo Māori, me te hāngai ki ngā take e rima:<sup>1</sup>



**WHAKAPAPA:** Tūpuna – Hononga – Tūrangawaewae – Tuakiri – Ahurea – Hapori – Tikanga – Mana Whenua



**TŪRANGAWAEWAE:** Tūrangawaewae – Tuakiri – Ahurea – Hapori – Wāhi – Te Ukiuki



**MANA MOTUHAKE:** Tūrangawaewae – Tuakiri – Mana – Raru – Tohe – Hua – Tino Rangatiratanga



**KAITIAKITANGA:** Wā – Horopaki – Tirohanga – Mōhiotanga – Tikanga – Kaitiakitanga

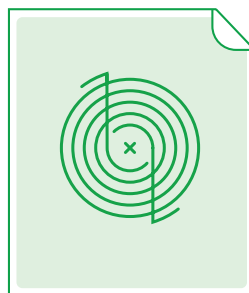


**WHANAUNGATANGA:** Whānau – Hapū – Iwi – Whakapapa – Tūpuna – Hononga – Hapori – Manaakitanga – Kotahitanga

Mā ēnei take e kitea he ara hei hono atu mā ngā ākonga ki te hītori o te reo Māori. Ki te kite koe i ēnei atahanga, ka mōhio koe he whai hononga ki ngā ngohe, ki ngā kōrero me ngā take matua hoki.

## Mō te pukamahi a te ākonga:

### TŌKU ARA REO MĀORI



Tōna tikanga mā te ākonga tēnei pukamahi, māna ake hei mahi, ā tōna ake wā, he whai kaupapa, ā, ko Te Mana o te Reo Māori te horopaki ako. He whakahau i ngā ākonga ki te tūhura i ngā āhuratanga onamata, inamata, anamata hoki e pā ana ki ā rātou haerenga reo Māori. Mā ngā ngohe me ngā tūmahi e āwhina rātou ki te tūhura ngā āhuratanga reo Māori i ō rātou ake hapori – i he ai kitea ai, i rangona ai, i kōrerohia ai: i te kāinga, i te kura, i te hapori, i te taiao ā-rohe, i te whenua me te ao hoki. Mā tēnei pukamahi ngā ākonga e āwhina ki te whakaata i ō rātou wawata mō te reo Māori mā te whakaaro ake mō:

<sup>1</sup> I tangohia ēnei ariā i te pukapuka nā Te Tāhuhu o te Mātauranga (2015) *Te Takanga o te Wā: Māori History – Guidelines for Years 1–8*. Te Whanganui-a-Tara: CORE Education.

- ▶ ō rātou ake moemoeā mō te reo Māori
- ▶ ngā āhuatanga onamata, inamata, i whai pānga ana ki ō rātou haerenga reo Māori
- ▶ te āhua o te reo Māori anamata me tōna pānga ki te ao hei ngā rā ki tua
- ▶ te whai wāhi ki te whakarauoratanga o te reo Māori.

## Mō te pūkei whakaahua:

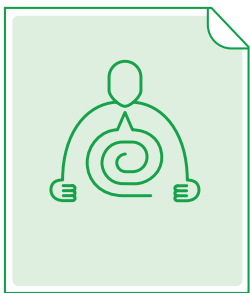
### HE PŪKEI WHAKAAHUA O TE MANA O TE REO MĀORI



E 12 ngā whakaahua kei tēnei rauemi e pā ana ki te pūrākau matihiko mō Te Mana o te Reo Māori. Arā noa atu ngā whakamahinga mō ēnei whakaahua mā ngā ākonga, kaiako hoki hei tautoko i ngā akoranga mō tēnei kaupapa. He taharua ngā whakaahua nei. He pātai hāngai kei tētahi taha hei āwhina i ngā ākonga ki te tūhura i ō rātou mōhiotanga e pā ana ki te kaupapa nei. He pārongo anō mā ngā kaiako hei whakahaere matapaki ā-rōpū, tūmahi rānei e pā ana ki ngā take matua o te pūrākau matihiko.

## Mō ngā Aratohu mā te Pouako:

### TE MANA O TE REO MĀORI: HE ARATOHU MĀ TE POUAKO



E iwa ngā aratohu mā te pouako e hono ana ki tēnei rauemi. Ko tēnei te tuatahi o ngā aratohu, he whakatakinga mō tēnei kaupapa, he tautoko hoki i ngā kaiako ki te whakamahi i ngā āhuatanga o tēnei rauemi o Te Mana o te Reo Māori. Ko ērā atu o ngā aratohu e waru he hāngai ki ngā upoko e waru o te pūrākau matihiko kei runga o Te Tai Whakaea. Ngā mea kei ia o ngā rauemi:

- ▶ ngā hononga ki *Te Takanga o te Wā*
- ▶ ngā take me ngā āhuatanga hei kōrero mā ngā kaiako kia hāngai ki tōna upoko
- ▶ ētahi atu tūmahi e hono ana ki ngā take matua o *Te Takanga o te Wā*.

## He tukanga pakirehua pāpori

### HE AHA TE TUKANGA PAKIREHUA PĀPORI?

Ko te tukanga pakirehua pāpori he tukanga kōmitimiti hei tiroiro i ngā take pāpori, i ngā whakaaro, me ngā ariā.<sup>2</sup> Ko tā te tukanga pakirehua pāpori he tūhura kaupapa me ngā ariā nō roto mai i ngā horopaki e whaihua ana mā ngā ākonga. Me patapatai e ngā ākonga me te whakaatu i tō rātou māramatanga ki ngā akoranga hou. Mā te whakamahi o te tukanga pakirehua pāpori ka āwhina ngā ākonga ki te whakawhanake i ō rātou pūkenga pērā i te āta tiroiro, i te whakaaro whaitake, me te āta tātari, ā, ka whakawhanake hoki i tētahi tūāpapa hei arotake i tō rātou mātauranga e mōhiotia ana i tēnei wā.

Mō roto mai i te tukanga pakirehua pāpori ka whakawhanake ngā ākonga i ngā pūkenga hei tautohu, hei āta tiroiro, hei whakamārama me te tūhura i ō rātou ake uara me ō ētahi atu e pā ana ki tētahi kaupapa. Mā te tātari ēnei uara me te tūhura te take i uara ai, ka hōhonu ake te māramatanga o ngā ākonga ki ngā take ka whakaaro pērā ai te tangata.

<sup>2</sup> Te Tāhuhu o te Mātauranga. (2008). *Approaches to Social Inquiry: Building Conceptual Understandings in the Social Sciences*. Te Whanganui-a-Tara: Learning Media.

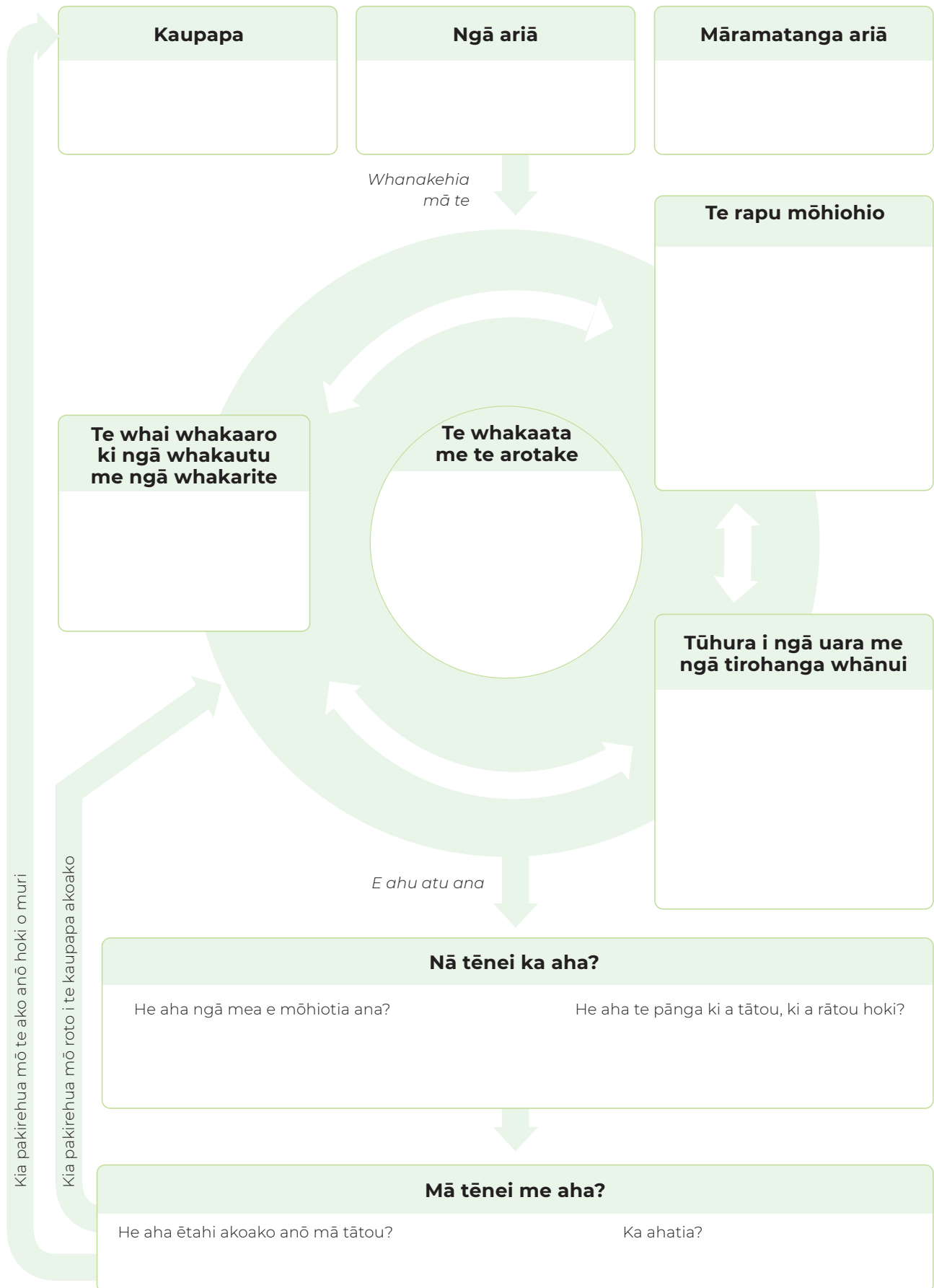
## TE ĀHUA O TE TUKANGA PAKIREHUA PĀPORI?

Mā te tukanga pakirehua pāpori ngā ākonga e:

- ▶ **mōhio ai** ki te kaupapa
- ▶ **tautohu ai** tō rātou mōhio tanga o mua  
mō te kaupapa
- ▶ **whakahiato ai** ngā tino pātai mō te pakirehua
- ▶ **tīpako ai** ngā mōhio hio e hāngai ana
- ▶ **whakaemi ai** ngā mōhio hio me ngā ariā  
take take
- ▶ **tūhura ai, e tātari ai** hoki ngā uara o te tangata  
me tōna tirohanga atu
- ▶ **āta tiro tiro ai** ngā urupare a te tangata,  
āna whakatau me āna mahi mō te kaupapa
- ▶ **whakarite ai** ngā mōhio hio, ngā kitenga me  
ngā whakamāramatanga
- ▶ **whakawhiti mōhio hio ai** āna kitenga me  
tōna whakamāramatanga hei whakaatu  
i tāna i ako ai
- ▶ **whakaata ai** ā rātou tukanga me ngā tohutoro
- ▶ **arotake ai** ō rātou māramatanga
- ▶ **whakaaroaro ai** kia pakirehua anō i te kaupapa,  
mō te ako anō hoki o muri.

## TE MAHERE I TĒTAHI TUKANGA PAKIREHUA PĀPORI?

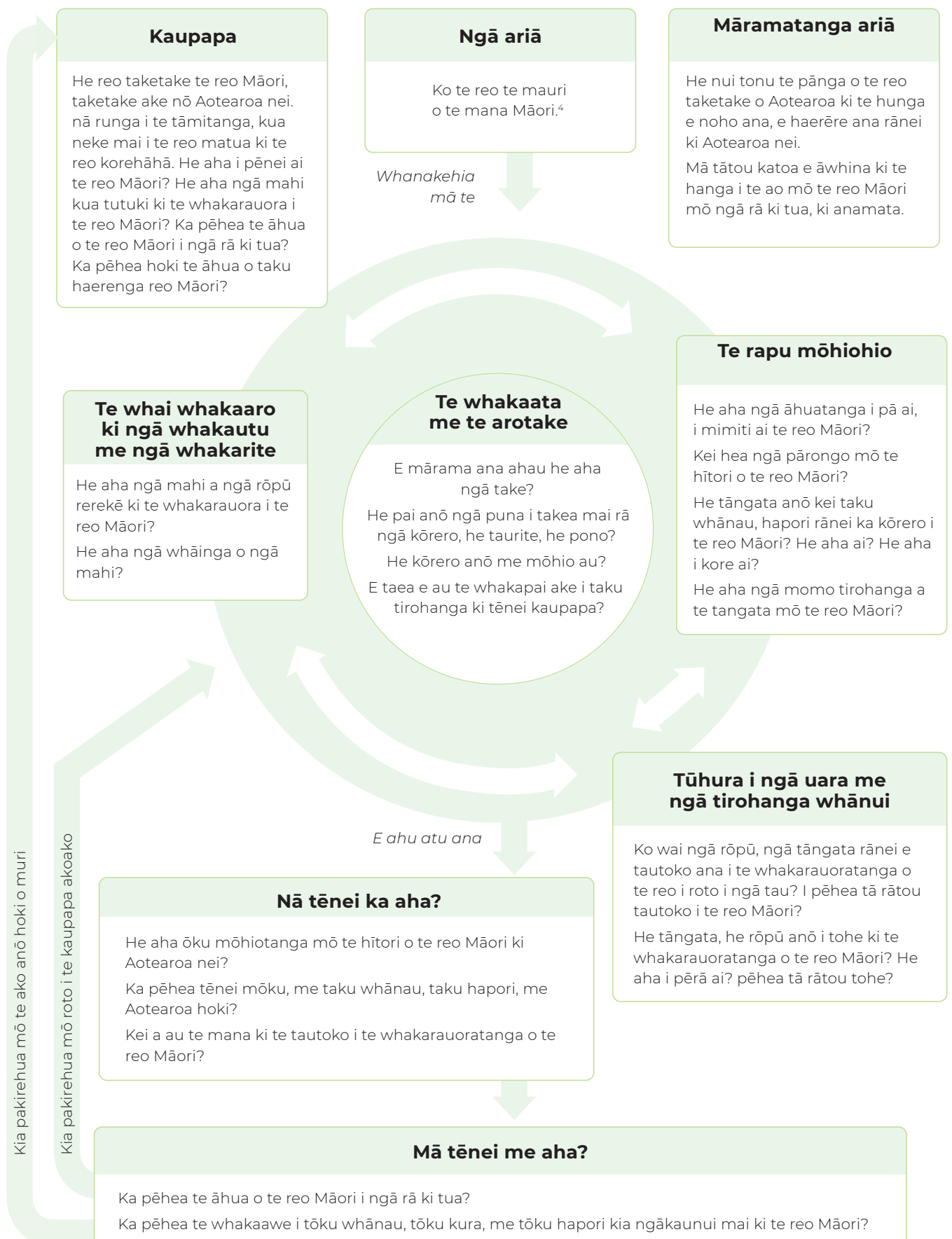
Ka taea te whakamahi te tauira<sup>3</sup> hei mahere i te pakirehua pāpori mō tēnei kōwae ako, mō tētahi atu rānei.



<sup>3</sup> I tangohia tēnei tauira i te pukapuka nā Te Tāhuhu o te Mātauranga (2008) *Approaches to Social Inquiry: Building Conceptual Understandings in the Social Sciences* (Te Whanganui-a-Tara: Learning Media).

## TE ĀHUA A TE TUKANGA PAKIREHUA PĀPORI MŌ TĒNEI HOROPAKI

Ko te mahere taurira mō tētahi ara pakirehua pāpori hei tūhura i te hītori o te reo Māori.



<sup>4</sup> I puta ēnei kupu i te waha o Tā Hemi Hēnare ki te Taraipūnara o Waitangi i te tau 1985.